

PARTS CATALOGUE

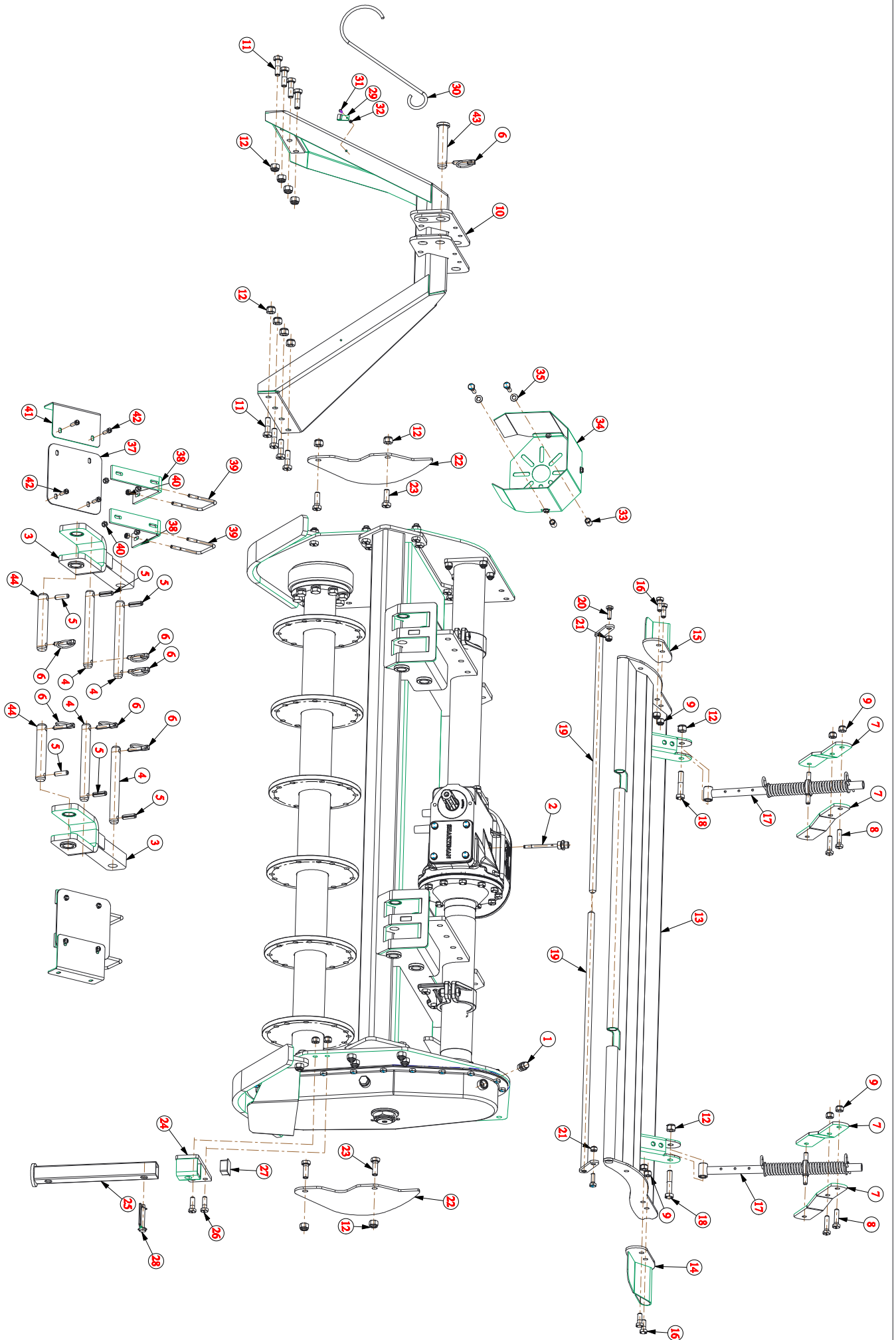


VICTOR SERIES ROTARY TILLER

MAKING AGRICULTURE MORE ECONOMICAL

PM 1124/REV.01/2015

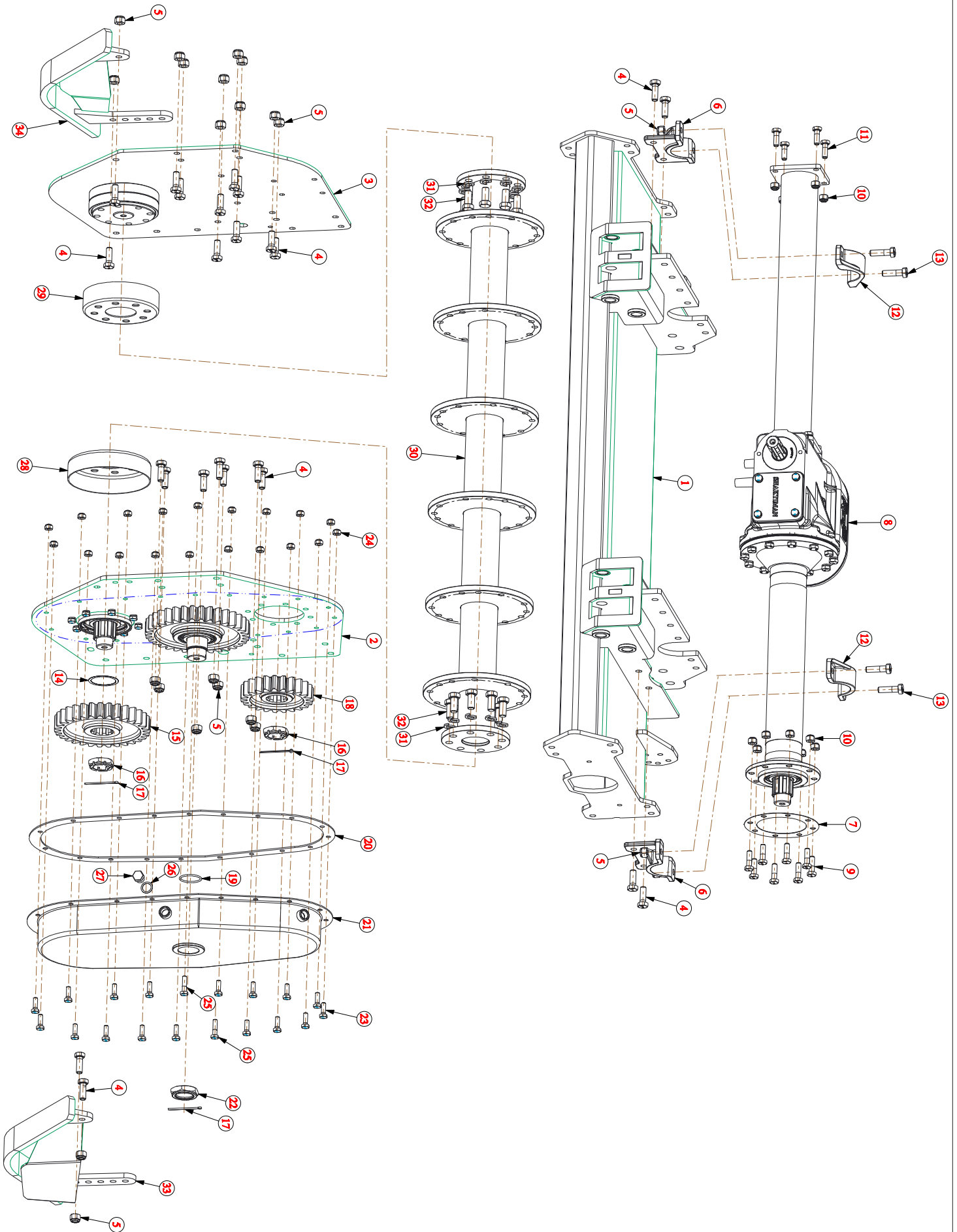
ACCESSORIES PARTS



SR NO	MANUAL CODE	MATERIAL DESCRIPTION	QTY
1	N/A	AIR BREATHER 1/2" BSP (1GTSR38)	1
2	3330	DIPSTICK 87MM (1/2" BSP)	1
3	23083	CLEVIS, LOWER HITCH (CATEGORY II)(JUMBO)	2
4	23105	PIN,LOWER HITCH ATTACHMENT (JUMBO)	4
5	23067	SPRING PIN D12X40	6
6	23062	SPLIT PIN D11XL50	7
7	3291	BRACKET SPRING ADJ. SUPPORT (VICTOR)	4
8	3338	HEX BOLT M12 X 1.75 X 45 (8.8) DIN933	4
9	1209	M12X1.75 NYLOCK NUT	10
10	3282	TOP MAST WELDMENT (VICTOR)	1
11	3339	HEX BOLT M14 X 1.50 X 45 (8.8) DIN931	8
12	1302	M14X1.5 NYLOCK NUT	14
13	3310	REAR BOARD 150 (VICTOR)	1
	3285	REAR BOARD 175 (VICTOR)	
	3296	REAR BOARD 200 (VICTOR)	
	3302	REAR BOARD 225 (VICTOR)	
14	3286	EXTENSION REAR BOARD TR. SIDE (VICTOR)	1
15	3287	EXTENSION REAR BOARD EX. SIDE (VICTOR)	1
16	17275	HEX BOLT M12 X 1.75 X 30 (8.8) DIN931	4
17	2302	DAMPER SPRING ASSY (SEMI +)	2
18	3346	HEX NUT M14 X 1.50 X 70 (8.8) DIN 931	2
19	3311	ROD REAR BOARD WELDMENT 150 (VICTOR)	2
	3289	ROD REAR BOARD WELDMENT 175 (VICTOR)	
	3297	ROD REAR BOARD WELDMENT 200 (VICTOR)	
	3303	ROD REAR BOARD WELDMENT 225 (VICTOR)	
20	3340	HEX BOLT M10 X 1.50 X 30 (8.8) DIN933	2
21	1298	M10X1.5 NYLOCK NUT	2
22	3290	CE SIDE SHIELD (VICTOR)	2
23	3341	HEX BOLT M14 X 1.50 X 40 (8.8) DIN933	4
24	4526	SIDE STAND OUTER COMPLETE (BAN)	1
25	4527	SIDE STAND COMPLETE (BAN)	1
26	17274	HEX BOLT M12 X 1.75 X 35 (8.8) DIN931	2
27	4657	SIDE STAND TOP BUSH (BAN)	1
28	2364	SNAPPER PIN (SQ.) D9.5 X L70	1
29	23147	PLATE,HOOK HOLDING (JUMBO)	1
30	23146	DRIVELINE HOOK (JUMBO)	1
31	23029	HEX BOLT M4 X 0.75 X 10	1

SR NO	MANUAL CODE	MATERIAL DESCRIPTION	QTY
32	23028	HEX NUT M4 X 0.75	1
33	1417	JOINT COVER MOUNTING BUSH	2
34	2357	PTO SHAFT GUARD ASSEMBLY (SEMI & CHA)	1
35	8078	PLAIN WASHER 10mm	2
36	3342	HEX BOLT M10 X 1.50 X 40 (8.8) DIN931	2
37	3337	PLATE END FRONT CE KIT 150 (VICTOR)	SRT-150/175 :- 2 Nos
	23150	PLATE,FRONT BARRIER (L=330) (JUMBO)	SRT-200/225 :- 2Nos
38	23149	BRACKET,FRONT BARRIER (JUMBO)	2
39	3260	SQ BEND U-BOLT M8X1.25X75X92X30TL	2
40	1297	M8X1.25 NYLOCK NUT	8
41	3333	PLATE,END,FRONT BARRIER (VICTOR)	1
42	8171	HEX BOLT M8 X 1.25 X 25	4
43	23104	PIN,TOP HITCH (CATEGORY II) (JUMBO)	1
44	23103	PIN,LOWER HITCH (CATEGORY II) (JUMBO)	2

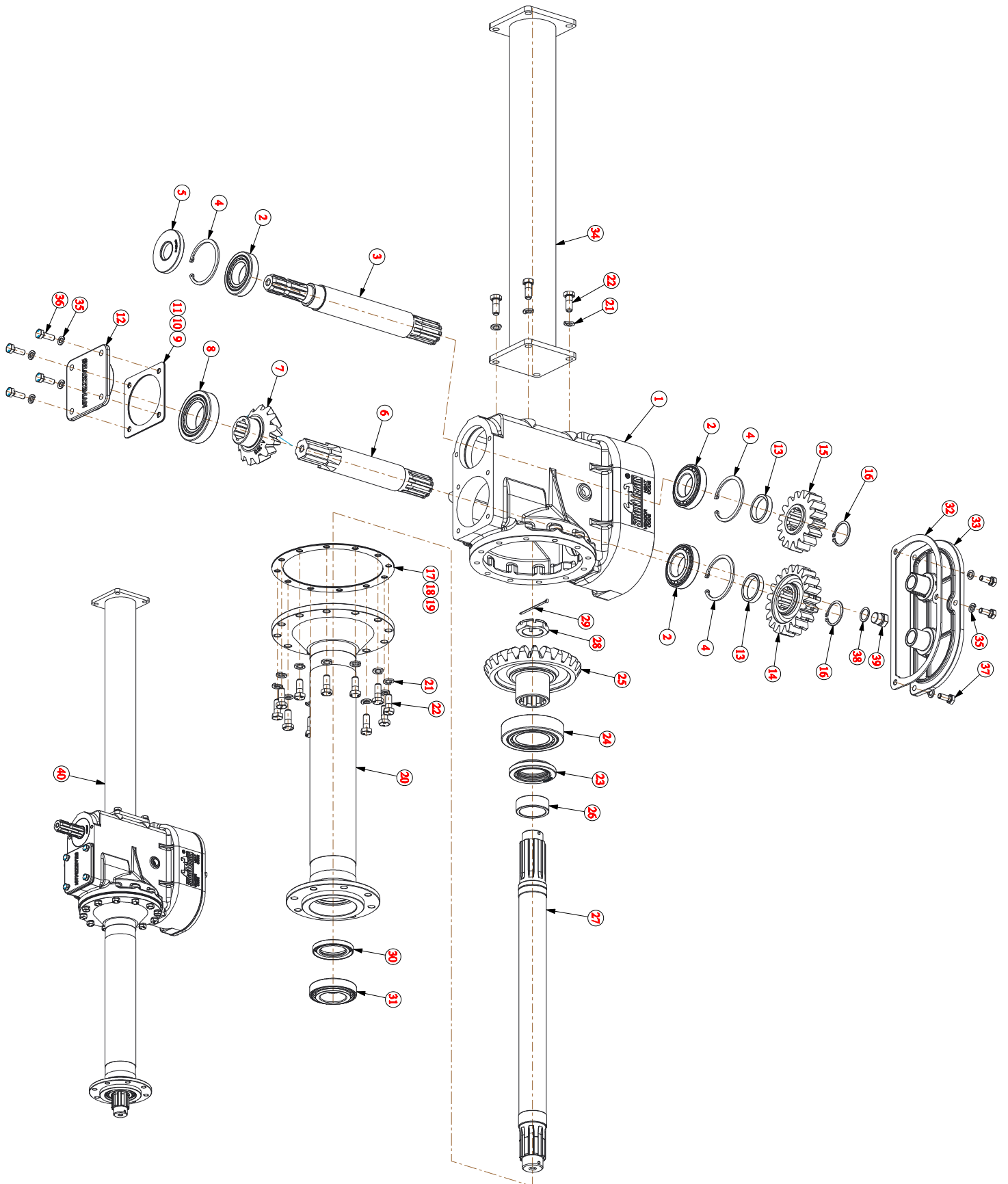
MACHINE PARTS



SR NO	MANUAL CODE	MATERIAL DESCRIPTION	QTY
1	3306	FRAME WELDMENT 150 (VICTOR)	1
	3268	FRAME WELDMENT 175 (VICTOR)	
	3292	FRAME WELDMENT 200 (VICTOR)	
	3298	FRAME WELDMENT 225 (VICTOR)	
2	3269	TILLER END PLATE TR. SIDE ASM (VICTOR)	1
3	3273	TILLER END PLATE EX. SIDE ASM (VICTOR)	1
4	3341	HEX BOLT M14 X 1.50 X 40 (8.8) DIN933	24
5	1302	M14X1.5 NYLOCK NUT	28
6	2232	JACK SHAFT HOUSING CLAMP BOTTOM (DIA 89)	2
7	2063	HOUSING FLANGE GASKET 8 HOLE CHA 0.4MM	1
8	3307	GEAR BOX ASSY 150 (VICTOR)	1
	3275	GEAR BOX ASSY 175 (VICTOR)	
	3293	GEAR BOX ASSY 200 (VICTOR)	
	3299	GEAR BOX ASSY 225 (VICTOR)	
9	3343	HEX BOLT M12 X 1.75 X 40 (8.8) DIN931	8
10	1209	M12X1.75 NYLOCK NUT	12
11	17274	HEX BOLT M12 X 1.75 X 35 (8.8) DIN931	4
12	2231	JACK SHAFT HOUSING CLAMP TOP (DIA 89)	2
13	12092	HEX BOLT M14 X 1.50 X 50	4
14	4652	SIMS (DIA 72 X 60)(0.20mm)	3
15	3021	GEAR 31 TEETH (CHA)	1
16	1093	CASTLE NUT 40mm	2
17	14137	COTTER PIN (DIA 4 X 70)	3
18	3019	GEAR 23 TEETH SIDE GEAR (CHA)	1
19	20351	'O" RING ID-47.2 MM X W-3.5 MM-SCH	1
20	3006	CHAIN COVER GASKET 19 HOLE(CHA)	1
21	3279	COVER WELDMENT GD SIDE (VICTOR)	1
22	23065	CASTLE NUT M45 X 1.5	1
23	3340	HEX BOLT M10 X 1.50 X 30 (8.8) DIN933	17
24	1298	M10X1.5 NYLOCK NUT	19
25	3342	HEX BOLT M10 X 1.50 X 40 (8.8) DIN931	2
26	1311	PLAIN WASHER 1/2" ALU.	1
27	2040	OIL LEVEL CAP (CHA)	1
28	1119	DUST COVER 6311 BIG	1

SR NO	MANUAL CODE	MATERIAL DESCRIPTION	QTY
29	1087	DUST COVER 6309 SMALL	1
30	3309	ROTOR WELDMENT OUTWARD 150 (VICTOR)	1
	3281	ROTOR WELDMENT OUTWARD 175 (VICTOR)	
	3295	ROTOR WELDMENT OUTWARD 200 (VICTOR)	
	3301	ROTOR WELDMENT OUTWARD 225 (VICTOR)	
31	1308	SPRING WASHER 16mm	16
32	1163	M16X1.5X35 HEX BOLT	16
33	3283	SKID WELDMENT TR. SIDE (VICTOR)	1
34	3284	SKID WELDMENT EX. SIDE (VICTOR)	1

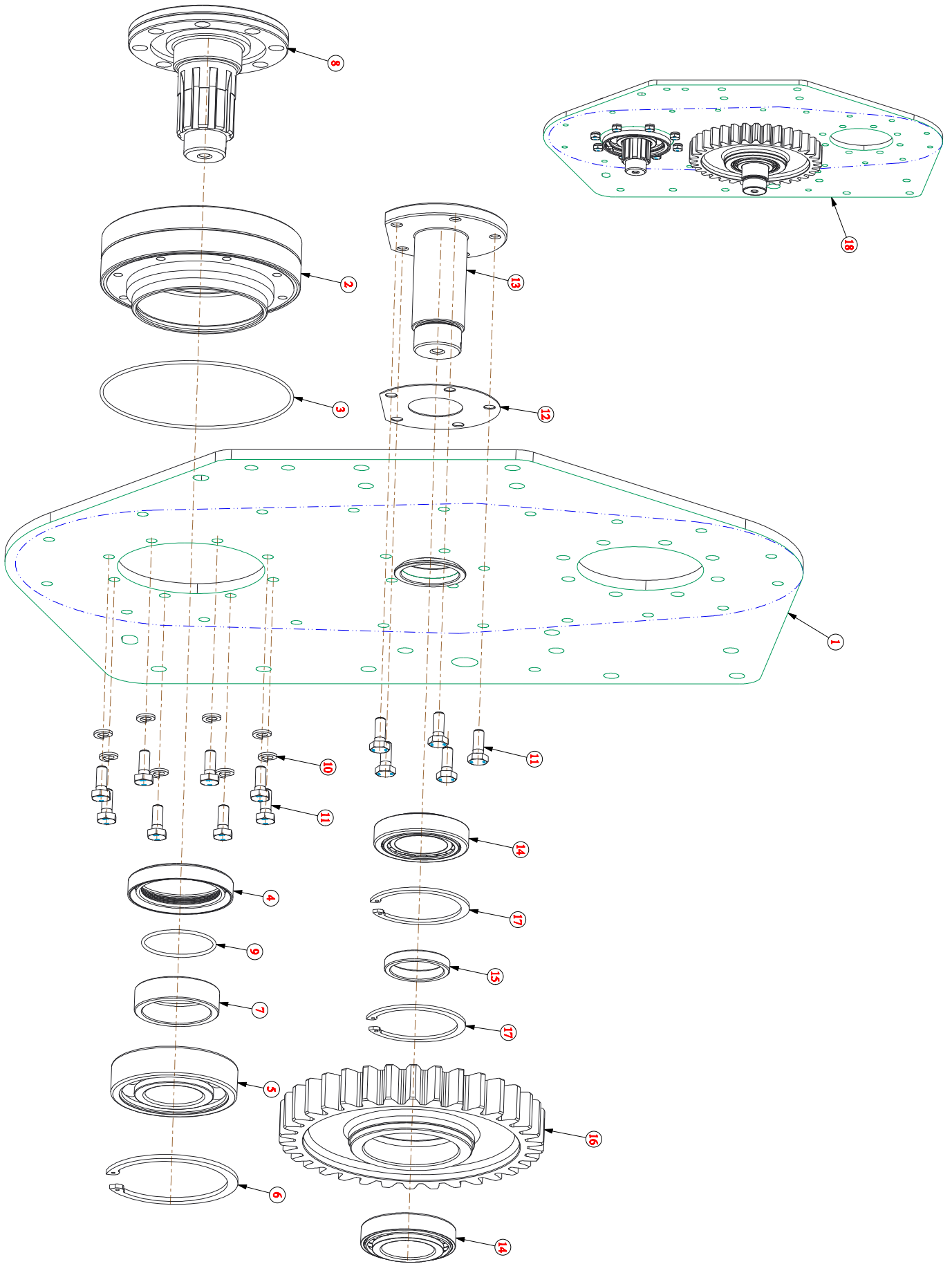
GEAR BOX PARTS



SR NO	MANUAL CODE	MATERIAL DESCRIPTION	QTY
1	3332	GEAR BOX 1000 RPM (CHA) UPGRADED	1
2	1045	BEARING 30209	3
3	2043	INPUT SHAFT 1000 RPM(CHA)	1
4	1049	CIRCLIP INTERNAL 85mm	3
5	1448	OIL SEAL 35 X 85 X 10	1
6	2061	INTER. SHAFT (CHA)	1
7	2005	PINION 13 TEETH (CHA)	1
8	1030	BEARING 32211	1
9	2107	INTER. SHAFT PLT GASKET 4 HOLE(CHA)1.5MM	1
10	2106	INTER. SHAFT PLT GASKET 4 HOLE(CHA)0.8MM	1
11	2012	INTER. SHAFT PLT GASKET 4 HOLE(CHA)0.4MM	1
12	3097	SHAKTIMAN BACK PLATE SMALL (CHA)NEW	1
13	2101	SPUR GEAR SPACER (CHA)	2
14	2052	SPUR GEAR 19 TEETH (CHA)	1
15	2049	SPUR GEAR 16 TEETH (CHA)	1
16	2089	EXTERNAL CIRCLIP 45MM	2
17	2105	HOUSING FLANGE GASKET 12 HOLE CHA 1.5MM	1
18	2104	HOUSING FLANGE GASKET 12 HOLE CHA 0.8MM	1
19	2018	HOUSING FLANGE GASKET 12 HOLE CHA 0.4MM	1
20	2015	JACK SHAFT HOUSING COMP SRT-5 (CHA)	1
	3336	J/S HOUSING COMP 688MM (VICTOR)	
	3277	J/S HOUSING COMP 808MM (VICTOR)	
	3143	JACK SHAFT HOUSING COMP(J-1057)(CHA)	
21	1306	SPRING WASHER 12mm	16
22	17275	HEX BOLT M12 X 1.75 X 30 (8.8) DIN931	16
23	2023	OIL SEAL 65 X 90 X 10	1
24	2024	BEARING 32213	1
25	2025	CROWN 23 TEETH (CHA)	1
26	2022	JACK SHAFT SLEEVE (CHA)	1
27	2020	JACK SHAFT (CHA)SRT-5	1
	3335	JACK SHAFT 812MM (VICTOR)	
	3276	JACK SHAFT 932MM (VICTOR)	
	3142	JACK SHAFT (CHA)1057mm	
28	1093	CASTLE NUT 40mm	1

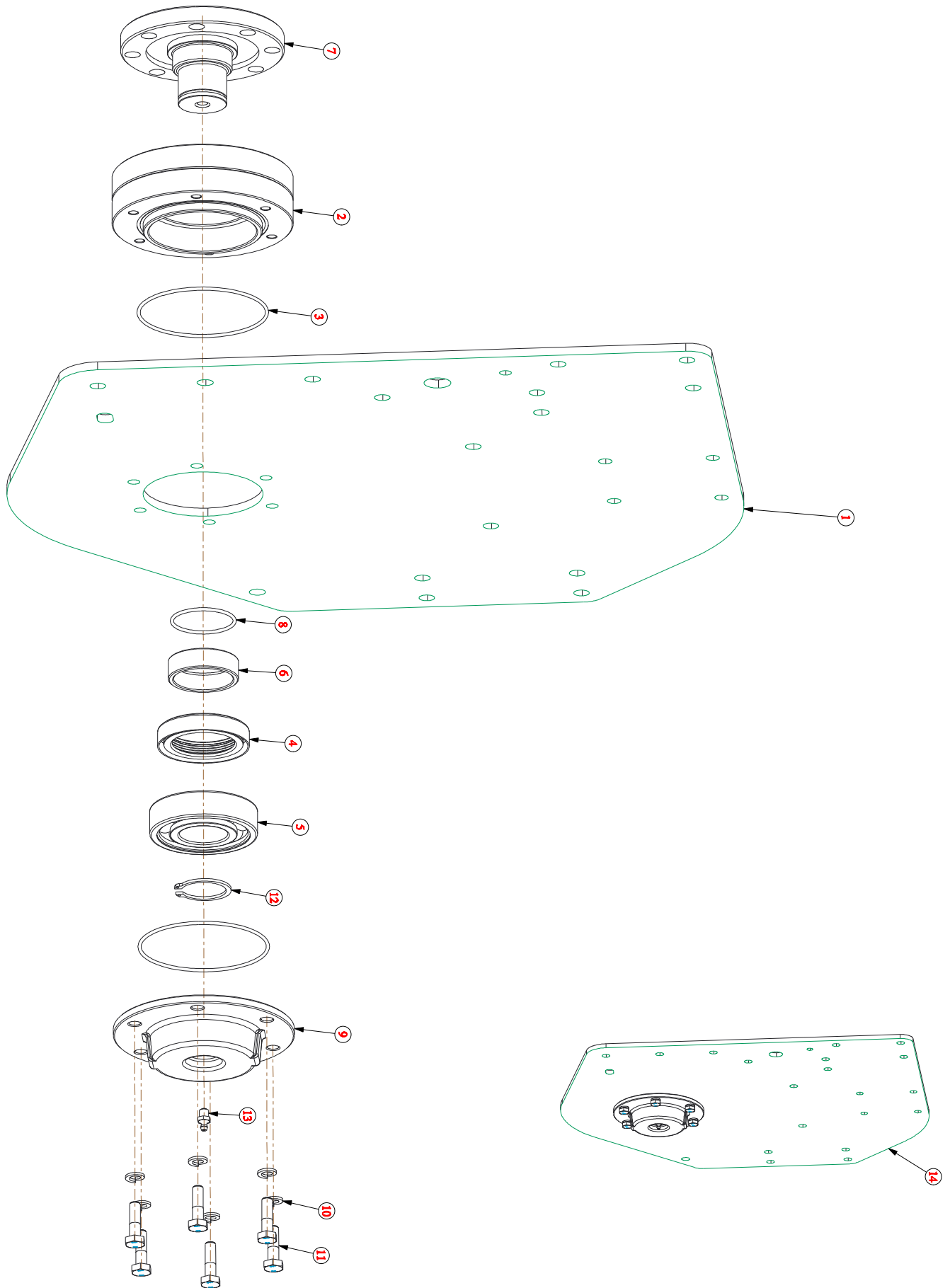
SR NO	MANUAL CODE	MATERIAL DESCRIPTION	QTY
29	2100	COTTER PIN (DIA 4X76MM)	1
30	3248	OIL SEAL 55 X 78 X 8	1
31	1013	BEARING 30210	1
32	2225	BACK PLATE 1000 RPM GASKET (CHA)UPGRADED	1
33	3267	BACK PLATE 1000 RPM (CHA) UPGRADED ALU.	1
34	3312	EXTENSION TUBE 704MM EX. SIDE (VICTOR)	1
	3304	EXTENSION TUBE 829MM EX. SIDE (VICTOR)	
	3278	EXTENSION TUBE 949MM EX. SIDE (VICTOR)	
	3305	EXTENSION TUBE 1064MM EX. SIDE (VICTOR)	
35	1304	SPRING WASHER 10mm	7
36	3340	HEX BOLT M10 X 1.50 X 30 (8.8) DIN933	4
37	17270	HEX BOLT M10 X 1.50 X 25 (8.8) DIN931	3
38	1311	PLAIN WASHER 1/2" ALU.	1
39	2040	OIL LEVEL CAP (CHA)	1
40	3307	GEAR BOX ASSY 150 (VICTOR)	1
	3275	GEAR BOX ASSY 175 (VICTOR)	
	3293	GEAR BOX ASSY 200 (VICTOR)	
	3299	GEAR BOX ASSY 225 (VICTOR)	

SIDE DRIVE PARTS



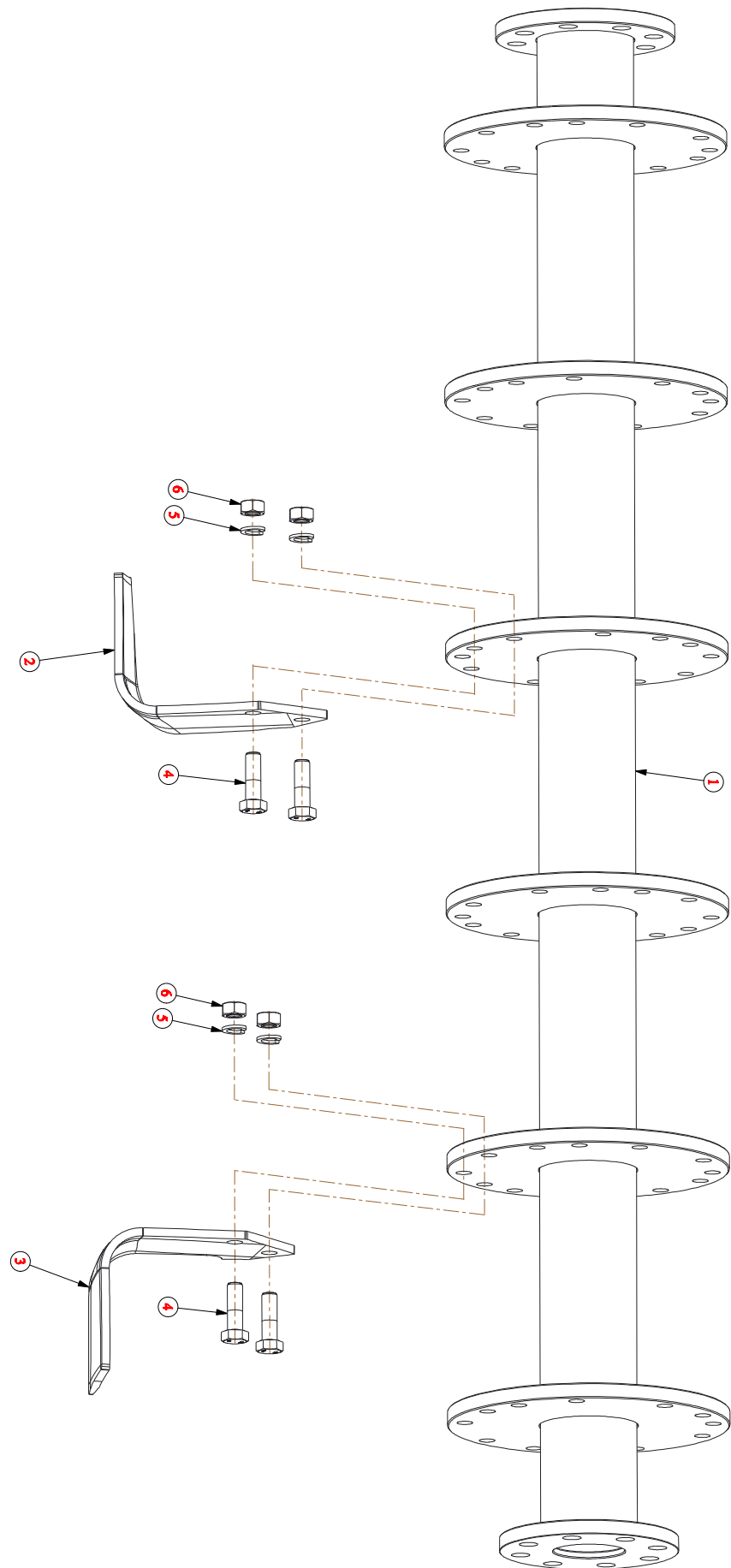
SR NO	MANUAL CODE	MATERIAL DESCRIPTION	QTY
1	3272	TILLER END PLATE WELD GD SIDE (VICTOR)	1
2	1530	R D HOUSING (REG+)	1
3	4654	O RING 175 X 3	1
4	1101	MULTILIP OIL SEAL BIG-6311	1
5	1102	BEARING 6311 LU	1
6	1103	INTERNAL CIRCLIP 120MM	1
7	1100	R D SLEEVE GEAR (REG) 22MM	1
8	4629	R D SHAFT (REG +)	1
9	1070	"O" RING 53X3(R.D SHAFT)	1
10	1304	SPRING WASHER 10mm	8
11	17270	HEX BOLT M10 X 1.50 X 25 (8.8) DIN931	13
12	3270	GASKET PIN IDLE GEAR (VICTOR)	1
13	3271	PIN IDLE GEAR (VICTOR)	1
14	1013	BEARING 30210	2
15	3026	MIDDLE SPACER 34 TEETH GEAR (CHA)	1
16	3020	GEAR 34 TEETH (CHA)	1
17	3027	INTERNAL CIRCLIP 90MM	2
18	3269	TILLER END PLATE TR. SIDE ASM (VICTOR)	1

STUB AXLE PARTS

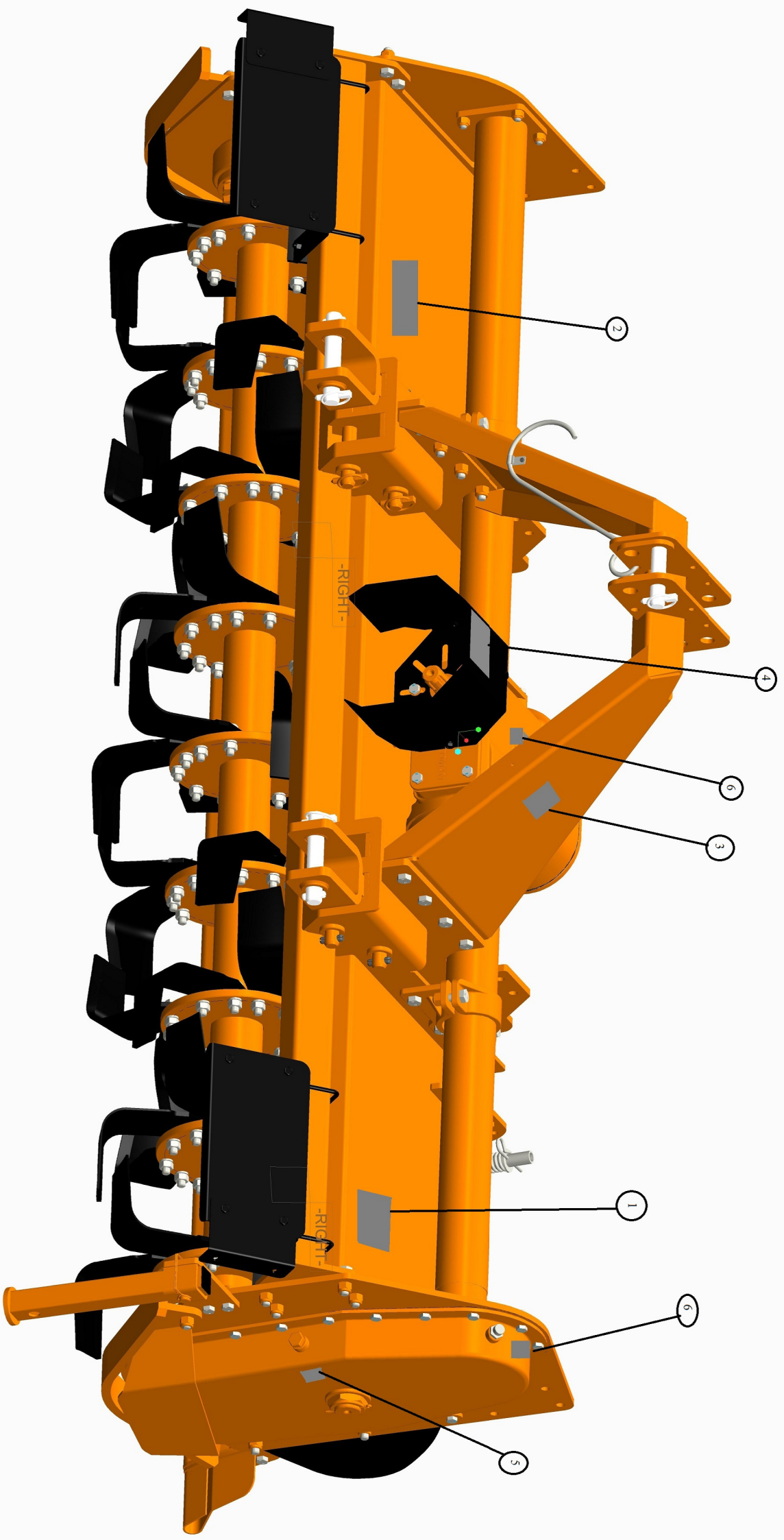


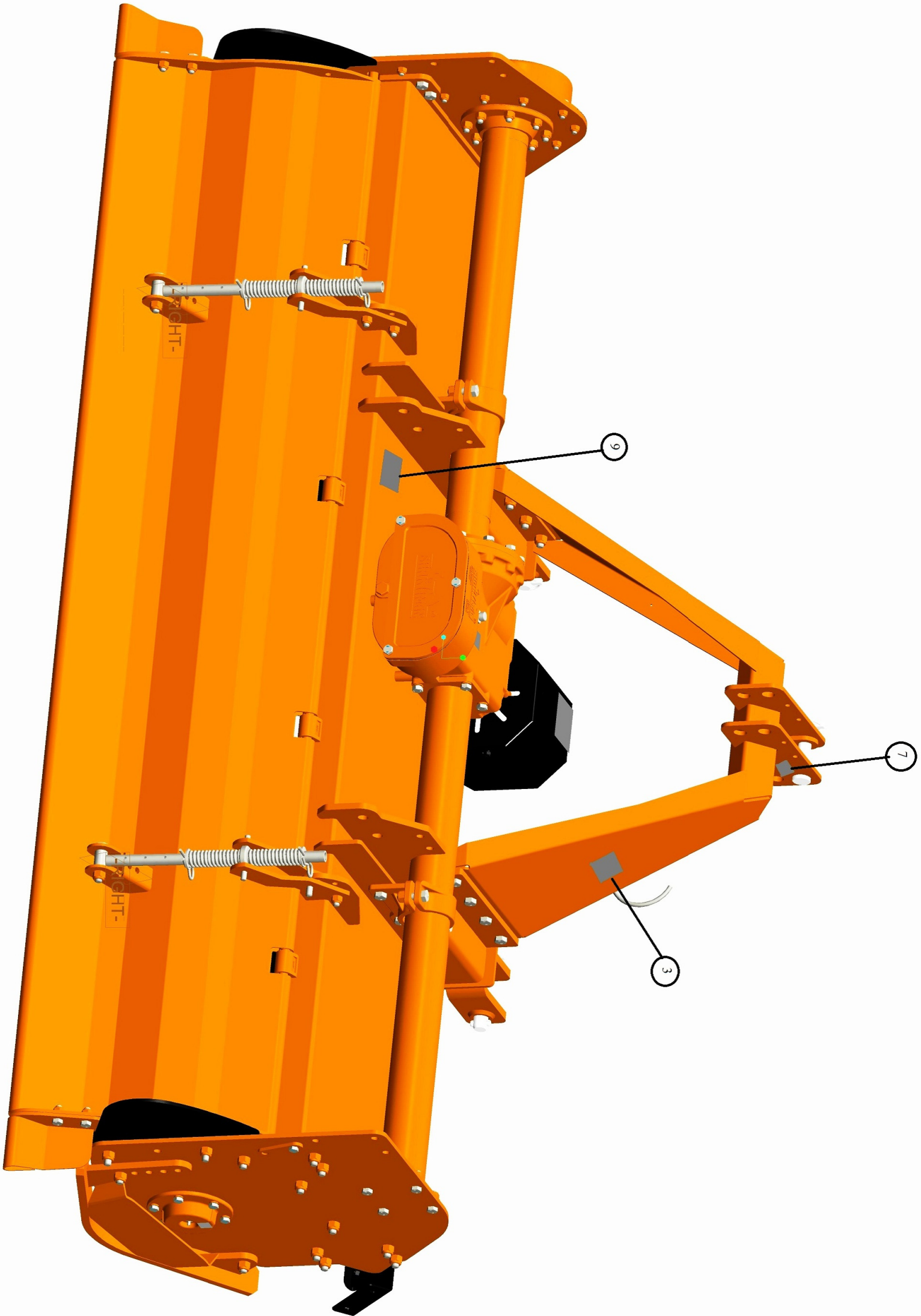
SR NO	MANUAL CODE	MATERIAL DESCRIPTION	QTY
1	3274	TILLER END PLATE EX. SIDE (VICTOR)	1
2	1529	STUB AXLE HOUSING (REG+)	1
3	1323	O RING 115 X 3	2
4	1072	MULTILIP OIL SEAL-6309	1
5	1073	BEARING 6309 LU	1
6	1071	STUB AXLE SLEEVE 19MM	1
7	4630	STUB AXLE (REG +)	1
8	1070	"O" RING 53X3(R.D SHAFT)	1
9	2331	STUB AXLE END COVER (NEW) (SEMI +)	1
10	1304	SPRING WASHER 10mm	6
11	3345	HEX BOLT M10 X 1.50 X 35 (8.8) DIN931	6
12	4711	CIRCLIP EXTERNAL 45MM (Heavy Duty)	1
13	1253	1/8 BSP GREASE NIPPLE 7.5MM	1
14	3273	TILLER END PLATE EX. SIDE ASM (VICTOR)	1










ROTOR PARTS



SR NO	MANUAL CODE	MATERIAL DESCRIPTION	QTY
1	3309	ROTOR WELDMENT OUTWARD 150 (VICTOR)	1
	3281	ROTOR WELDMENT OUTWARD 175 (VICTOR)	
	3295	ROTOR WELDMENT OUTWARD 200 (VICTOR)	
	3301	ROTOR WELDMENT OUTWARD 225 (VICTOR)	
2	23159	BLADE CURVED LH (90X8) (190X138)	AS REQ.
3	23160	BLADE CURVED RH (90X8) (190X138)	AS REQ.
4	3339	HEX BOLT M14 X 1.50 X 45 (8.8) DIN931	AS REQ.
5	1307	SPRING WASHER 14mm	AS REQ.
6	3347	HEX NUT M14 X 1.50 DIN 934	AS REQ.





Sr. No.	Part No.	Part Description	Image	Qty.
1	TAD0077	THROWN OBJECT AND MAINTENANCE		1
2	TAD0082	SAFETY EQUIPMENT		1
3	TAD0080	CRUSHING & THROWN/FLYING OBJECT HAZARDS.		2
4	TAD0081	INPUT DRIVELINES & PTO SPEED		1
5	TAD0079	ROTATING GEARS		1
6	TAD0007	OIL FILLING PLUG - NEW		2
7	TAD0083	LIFTING HOOK JOINT		1
8	TAD0008	GREASE - NEW		1
9	TAD0078	HAND HAZARD		1